

## **CLEARFIELD COUNTY GREENWAYS RECOMMENDATIONS AND IMPLEMENTATION STRATEGIES**



*Bilger's Rocks, Clearfield County*



*Houtzdale Line Rail Trail, Clearfield County*

*This page intentionally left blank*

## CLEARFIELD COUNTY GREENWAYS

Both recreation and transportation and natural systems greenway corridors were identified for the North Central region and each of its six counties, as described in *Chapter 2 - Where do We Want to Be?*

In this section we will identify both the recreation and transportation and natural systems greenway corridors being recommended for Clearfield County, discuss their priorities at the county level, and provide recommendations on implementation of the priority projects.



*This page intentionally left blank*

## CLEARFIELD COUNTY'S RECREATION AND TRANSPORTATION GREENWAY CORRIDORS

In Chapter Two, Building the Network, we identified, inventoried, and mapped the existing trails and potential hubs within Clearfield County. This information was analyzed and evaluated for potential trail opportunities by:

1. Identifying corridors which were either rail banked or in the process of being rail banked
2. Identifying existing trails which may have the potential to be extended to connect to a trail town, major hub, or hub
3. Identifying potential trail corridors through the public process
4. Identifying former rail corridors which are inactive and may provide an opportunity to serve as a trail corridor

As corridors were identified, many were reviewed and mapped utilizing aerial photography. Further, portions of some of the corridors were reviewed in the field.

During our analysis of potential corridors we categorized them as either:

- Conceptual: Meaning the proposed trail would either a former rail corridor / or follow a route designated through the public process, but there has not been any previous evaluation of the corridor as to its potential to become a trail.
- Proposed: Meaning either there has been a feasibility study completed for the proposed trail or there is an organization actively working towards acquiring public access and establishing a trail in the proposed corridor.

We must emphasize the corridors were evaluated based on their connectivity, and not based upon existing property ownership. As described earlier in this Chapter, Steps to Trail Implementation, the feasibility of obtaining public access to the potential trail corridor must be evaluated as part of an overall feasibility study. In many cases completing a feasibility study to evaluate the legal, financial, physical, management, and operations of the potential trail is the next step in the implementation process.

Utilizing the methodology establish in Chapter 2, existing, conceptual, and proposed recreation and transportation greenway corridors were identified, recommended, and prioritized as follows:

- |  |                            |
|--|----------------------------|
| • 37 existing trail corridors          | • 7 proposed trail towns   |
| • 1 designated scenic byway            | • 2 proposed scenic byways |
| • 18 conceptual / proposed corridors   | • 2 major hubs             |
| • 1 existing water trail               | • 7 hubs                   |
| • 4 proposed water trail opportunities |                            |

Clearfield County's Existing Trail Corridors

Clearfield County's Existing Trail Corridors	Typical Uses							
	Hiking	Biking	Equestrian	Cross Country Skiing	Interpretive Education	All Terrain Vehicle	Snowmobile	Off Road Motorcycle
Houtzdale Line Rail Trail	X	X	X	X				
Dimeling to Madera Trail	X	X		X				
Clearfield to Grampian Trail	X	X		X				
Beaver Meadow Walkway Trail	X				X			
Parker Dam State Park Trails	X	X						
Rockton Mountain Trail System	X	X						
Overland Trail	X							
Old Horse Trail	X							
Rattlesnake Trail	X							
Doctors Fork Trail	X							
Lick Run Trail	X							
CPL Trail	X							
Big Ridge Trail	X							
Spur Line Trail	X							
Quehanna Trail	X							
West Cross Connector	X							
Quehanna Cut Off Trail	X							
Ginger Whiskey Trail	X							
East Cross Connector	X							
Mosquito Creek Trail	X							
Bellefonte Posse Trail	X	X						
Kunes Camp Trail	X							
Mohawk Trail	X							
No. 5 Trail	X							
Reservoir Trail	X							
Lucas Run Trail	X							
Little Moyer Run Trail	X							
No. 11 Trail	X	X						
Old Sinnemahoning Trail	X							
Snow Shoe Trail	X	X				X		
State Game Lands No. 34 Designated Use Trails	X		X					
State Game Lands No. 77 Designated Use Trails	X		X					
State Game Lands No. 78 Designated Use Trails	X		X					
State Game Lands No. 87 Designated Use Trails	X		X					
State Game Lands No. 93 Designated Use Trails	X		X					
State Game Lands No. 94 Designated Use Trails	X		X					
State Game Lands No. 321 Designated Use Trails	X		X					

Clearfield County's Conceptual and Proposed Recreation & Transportation Greenway Corridors

Clearfield County's Conceptual and Proposed Recreation & Transportation Greenway Corridors	Trail Type (Regional, County, Connector)	Existing Trail Group Support	Corridor Status	Trail Demand	Land Acquisition	Connectivity	Benefits to the Public	Funding Opportunities & Partners	Economic Development Potential	Associated with Core Systems	Total	Regional Ranking	Clearfield County Ranking	Priority	Hiking	Biking	Equestrian	Cross Country Skiing	Interpretive Education	All Terrain Vehicle	Snowmobile	Off Road Motorcycle	Off Highway Vehicle
Mahoning Shadow Trail Extension	5	5	5	3	5	5	5	4	4	10	51	3-2	1	Exceptional	X	X		X					
DuBois to Falls Creek Trail	5	5	5	5	3	5	5	2	5	10	50	4-1	2		X	X		X					
Elk Country Trail	5	5	3	3	1	5	4	2	4	10	42	7	3		X	X		X					
Snow Shoe Rail Trail - Wallacetown to Clearfield	5	5	1	3	1	5	4	3	3	10	40	9-1	4		X	X				X		X	
Anderson Creek Gorge Trail	5	1	1	4	1	5	4	1	4	10	36	11	5		X	X		X					
Dimeling to Clearfield Trail	5	1	1	3	1	5	4	1	3	10	34	13-2	6		X	X		X					
Snow Shoe Rail Trail Extension	5	5	1	3	2	5	4	2	4	0	31	15	7		X	X				X		X	
Houtzdale Line Trail Extension East	5	5	1	3	1	5	4	2	4	0	30	16-1	8	Significant	X	X	X	X					
Burnside Trail	3	1	1	3	1	3	3	1	2	10	28	18-2	9		X	X		X					
Snow Shoe Rail Trail Extension - Philipsburg to Hale	5	5	1	3	1	3	3	3	3	0	27	19-1	10		X	X				X		X	
Irvona Mahaffey Trail	1	1	1	2	1	3	3	1	2	10	25	21-1	11		X	X		X					
Montgomery Creek Trail	1	1	0	2	1	3	2	1	2	10	23	23-2	12		X	X		X					
Irvona Branch Corridor Trail	3	1	1	3	1	4	4	2	3	0	22	24-1	13		X	X		X					
Houtzdale Trail Extension West	3	3	1	4	1	3	3	2	1	0	21	25-1	14	High	X	X	X	X					
Penn Central Transportation Corridor Trail	1	1	1	2	1	2	2	0	1	10	21	25-2	14		X	X		X					
Burnside Cherry Tree Trail	1	1	1	2	1	3	2	0	0	10	21	25-3	14		X	X		X					
Irvona to Game Land Trail	1	1	1	2	1	3	2	1	2	0	14	32-1	15		X	X							
Great Shamokin Path Trail	5	1	0	1	0	1	2	0	1	0	11	35	16		X								

Clearfield County's Potential Water Trails

Clearfield County's Potential Water Trails	Connection / Extension of Existing Water Trail	Trail Demand	Connectivity	Economic Development Potential	Associated with Potential Trail Town	No. Counties	Associated with Core Systems	Total	Regional Ranking	Clearfield County Ranking	Priority
Clearfield Creek	5	3	3	3	1	1	10	26	3	1	Exceptional
Anderson Creek	5	1	1	3	1	1	10	22	5	2	
Moshannon Creek	5	1	1	1	0	1	0	9	10	3	Significant
Chest Creek	5	1	1	1	0	1	0	9	10	3	

Clearfield County's Trail Towns, Major Hubs, & Hubs

- DuBois ..... Trail Town
- Clearfield..... Trail Town
- Curwensville ..... Trail Town
- Curwensville Lake ..... Hub
- Grampian..... Trail Town
- Philipsburg ..... Trail Town
- Coalport..... Trail Town
- Houtzdale ..... Hub
- Mahaffey ..... Major Hub
- Penfield ..... Major Hub
- Karthaus ..... Trail Town
- Bilgers Rocks ..... Hub
- S.B. Elliott State Park ..... Hub
- Parker Dam State Park ..... Hub
- Rock Run Recreation Area..... Hub
- Camp Wopsononock Natural Area..... Hub



## Location Map



## Trails

### Proposed & Conceptual Trails

1. Malheur Shadow Trail Extension
2. Delmar to Falls Creek Trail
3. Elk County Trail
4. Snow Shoe Trail Trail - Malheur to Clearfield
5. Anderson Creek Gorge Trail
6. Clearfield to Clearfield Trail
7. Snow Shoe Trail Trail
8. Horseback Line Trail Extension
9. Berwick Trail
10. Snow Shoe Trail Trail - Philipsburg to Berwick
11. Irons Mountain Trail
12. West Branch Trail
13. West Branch Trail
14. West Branch Trail Extension
15. West Branch Trail Extension
16. West Branch Trail Extension
17. West Branch Trail Extension
18. West Branch Trail Extension
19. West Branch Trail Extension
20. West Branch Trail Extension
21. West Branch Trail Extension
22. West Branch Trail Extension
23. West Branch Trail Extension
24. West Branch Trail Extension
25. West Branch Trail Extension
26. West Branch Trail Extension
27. West Branch Trail Extension
28. West Branch Trail Extension
29. West Branch Trail Extension
30. West Branch Trail Extension

### Existing Trails

1. West Branch Trail
2. Clearfield to Clearfield Trail
3. Clearfield to Clearfield Trail
4. Clearfield to Clearfield Trail
5. Clearfield to Clearfield Trail
6. Clearfield to Clearfield Trail
7. Clearfield to Clearfield Trail
8. Clearfield to Clearfield Trail
9. Clearfield to Clearfield Trail
10. Clearfield to Clearfield Trail
11. Clearfield to Clearfield Trail
12. Clearfield to Clearfield Trail
13. Clearfield to Clearfield Trail
14. Clearfield to Clearfield Trail
15. Clearfield to Clearfield Trail
16. Clearfield to Clearfield Trail
17. Clearfield to Clearfield Trail
18. Clearfield to Clearfield Trail
19. Clearfield to Clearfield Trail
20. Clearfield to Clearfield Trail
21. Clearfield to Clearfield Trail
22. Clearfield to Clearfield Trail
23. Clearfield to Clearfield Trail
24. Clearfield to Clearfield Trail
25. Clearfield to Clearfield Trail
26. Clearfield to Clearfield Trail
27. Clearfield to Clearfield Trail
28. Clearfield to Clearfield Trail
29. Clearfield to Clearfield Trail
30. Clearfield to Clearfield Trail

### Existing Water Trails

1. West Branch Trail

### Proposed Water Trails

1. Clearfield Creek
2. Anderson Creek
3. Anderson Creek
4. Anderson Creek

### Existing Scenic Byways

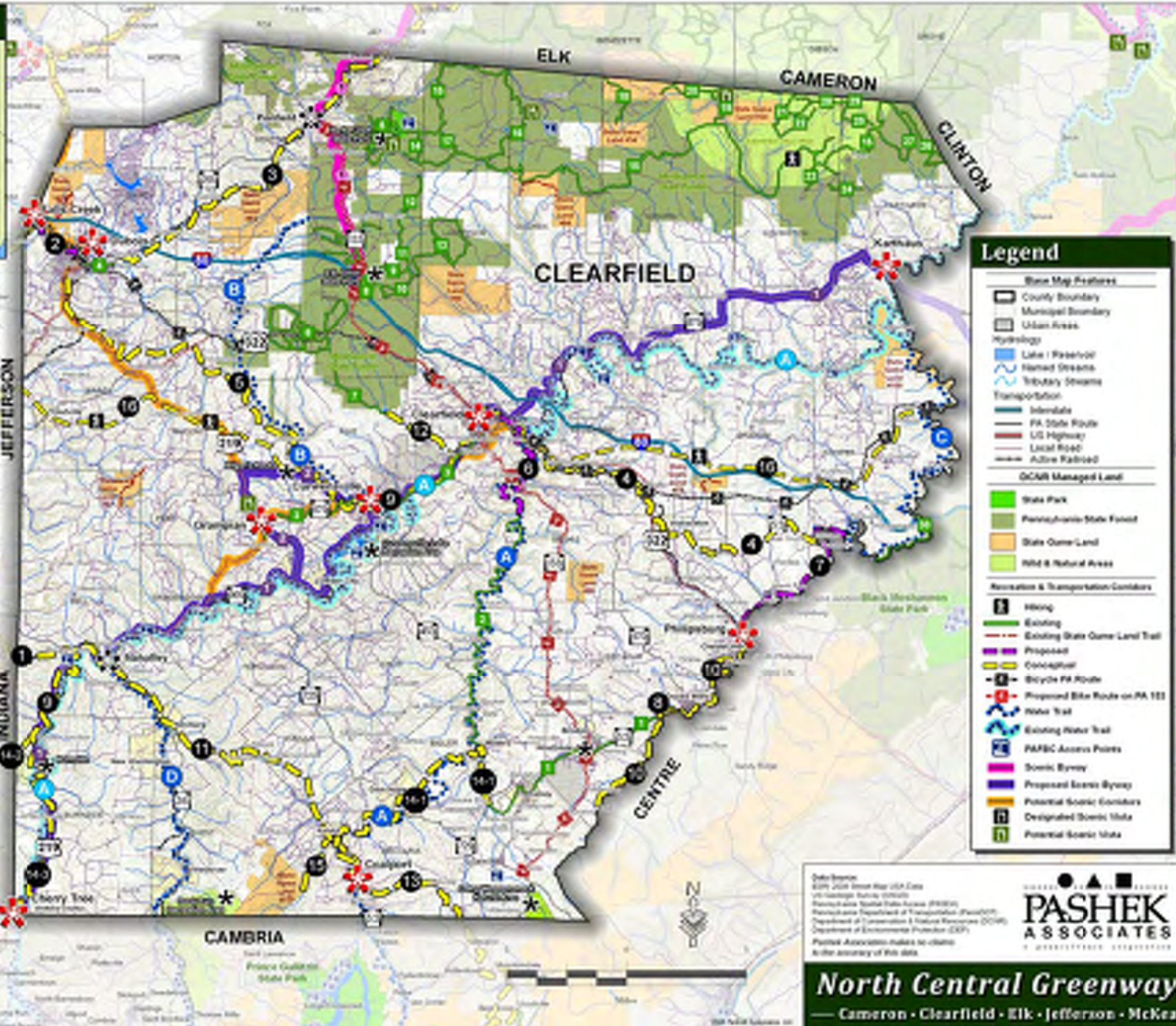
1. Elk County Drive

### Proposed Scenic Byways

1. West Branch Byway
2. West Branch Byway

### Points of Interest

1. Proposed Trail Trail
2. Main Trail
3. Trail



## Legend

- Base Map Features**
- County Boundary
  - Municipal Boundary
  - Urban Areas
  - Hydrology
  - Lake / Reservoir
  - Headed Stream
  - Tributary Stream
  - Transportation
  - Interstate
  - PA State Route
  - US Highway
  - Local Road
  - Active Railroad
- OCAR Managed Land**
- State Park
  - Pennsylvania State Forest
  - State Game Land
  - Wild & Natural Areas
- Recreation & Transportation Corridors**
- Along
  - Existing
  - Existing State Game Land Trail
  - Proposed
  - Conceptual
  - Bicycle PA Route
  - Proposed Bike Route on PA 111
  - Water Trail
  - Existing Water Trail
  - PAFBC Access Points
  - Scenic Byway
  - Proposed Scenic Byway
  - Potential Scenic Corridor
  - Designated Scenic Vista
  - Potential Scenic Vista

PASHEK ASSOCIATES
   
 A PROFESSIONAL CORPORATION

**North Central Greenways Plan**
  
 — Cameron • Clearfield • Elk • Jefferson • McKean • Potter —

**Clearfield County**
  
**Proposed - Recreation & Transportation Greenways**



*This page intentionally left blank*



## Location Map



## Natural Systems Greenways

- |                                   |                             |
|-----------------------------------|-----------------------------|
| 1. Mosquito Creek                 | 12. Alder Run               |
| 2. Muddy Run                      | 13. Bennett Branch          |
| 3. Laurel Run                     | 14. Chest Creek             |
| 4. Moshannon Creek                | 15. Medix Run               |
| 5. Anderson Creek                 | 16. Moravian Run            |
| 6. Sandy Lick Creek               | 17. Deer Creek              |
| 7. Clearfield Creek               | 18. Upper Three Runs        |
| 8. Lick Run                       | 19. Montgomery Creek        |
| 9. West Branch Susquehanna River  | 20. Little Clearfield Creek |
| 10. Mahoning Creek                | 21. Witmer Run              |
| 11. Trout Run (Clearfield County) | 22. Sandy Creek             |

## Legend

### Base Map Features

- County Boundary
- Municipal Boundary
- Urban Areas
- Hydrology**
- Lake / Reservoir
- Named Streams
- Tributary Streams
- Transportation**
- Interstate
- PA State Route
- US Highway
- Local Road
- Active Railroad
- Managed (Conserved) Lands
- Managed (Conserved) Wild and Natural Areas

### Natural Systems Greenways

- 16 to 27
- 28 to 36
- 37 to 47

JEFFERSON

CAMERON

CAMBRIA

ELK

CAMERON

CLINTON

CENTRE

CLEARFIELD

Data Source:  
 ESRI 2008 Street Map USA Data  
 US Geological Survey (USGS)  
 Pennsylvania Spatial Data Access (PASDA)  
 Pennsylvania Department of Transportation (PennDOT)  
 Department of Conservation & Natural Resources (DCNR)  
 Department of Environmental Protection (DEP)  
 Pashek Associates makes no claims  
 to the accuracy of this data.

**PASHEK**  
 ASSOCIATES  
 a pennsylvania corporation

**North Central Greenways Plan**

— Cameron • Clearfield • Elk • Jefferson • McKean • Potter —

**Clearfield County**  
*Natural Systems Greenways*



**Clearfield County - Natural Systems Greenways Priorities Chart**

County Priority	County Rank	Greenway Name	Sensitivity Ranking	Total Acres	Conserved Acres	Percent Conserved	Non-Conserved Acres	Percent Non-Conserved	Managed Lands (Conserved)	Regional Rank	Regional Priority
Exceptional	1	Mosquito Creek	24.43	17,450	15,633	89.59%	1,817	10.41%	Quehanna Wild Area, Moshannon State Forest, Elk State Forest, State Game Land #34	17	Exceptional
	2	Muddy Run	22.58	2,616	580	22.17%	2,036	77.83%	Camp Wopsononock	39	Exceptional
	3	Laurel Run	22.20	4,922	3,920	79.64%	1,002	20.36%	Moshannon State Forest, Parker Dam State Park	43	Significant
Significant	4	Moshannon Creek	21.58	5,822	330	5.67%	5,492	94.33%	State Game Land #100	47	Significant
	5	Anderson Creek	21.47	7,315	2,382	32.56%	4,933	67.44%	Moshannon State Forest, State Game Land #93, S.B. Elliott State Park	49	Significant
	6	Sandy Lick Creek	21.03	4,747	40	0.84%	4,707	99.16%	State Game Lands #77 and #93	53	Significant
	7	Clearfield Creek	21.01	5,317	11	0.21%	5,306	99.79%	State Game Land #98	55	Significant
	8	Lick Run	20.93	3,952	2,264	57.29%	1,688	42.71%	State Game Land #90, Moshannon State Forest, S.B. Elliot State Park	56	Significant
	9	West Branch Susquehanna River	20.79	18,776	1,330	7.08%	17,446	92.92%	State Game Land #87, Moshannon State Forest, S.B. Elliot State Park	59	Significant
	10	Mahoning Creek	20.67	5,385	80	1.49%	5,305	98.51%	State Game Land #87	60	Significant
	11	Trout Run (Clearfield County)	20.14	5,968	2,180	36.53%	3,788	63.47%	State Game Land #94, Moshannon State Forest	65	Significant
	12	Alder Run	20.01	1,226	-	-	1,226	100.00%		66	Significant
	13	Bennett Branch	19.93	4,118	2,172	52.74%	1,946	47.26%	Moshannon State Forest, State Game Land #93	67	Significant
	14	Chest Creek	19.42	10,669	28	0.26%	10,641	99.74%	State Game Land #120	74	Significant
High	15	Medix Run	17.99	2,759	2,486	90.11%	273	9.89%	State Game Land #34, Moshannon State Forest	86	High
	16	Moravian Run	17.92	568	72	12.68%	496	87.32%	State Game Land #78	87	High
	17	Deer Creek	17.86	2,365	484	20.47%	1,881	79.53%	Moshannon State Forest	88	High
	18	Upper Three Runs	17.71	2,451	1,561	63.69%	890	36.31%	Moshannon State Forest, Quehanna Wild Area	89	High
	19	Montgomery Creek	17.25	1,817	1,392	76.61%	425	23.39%	Moshannon State Forest	93	High
	20	Little Clearfield Creek	17.13	5,569	-	-	5,569	100.00%		95	High
	21	North Witmer Run	17.02	5,661	1,908	33.70%	3,753	66.30%	State Game Land #120	96	High
	22	Sandy Creek	16.88	1,316	239	18.16%	1,077	81.84%	Moshannon State Forest	97	High
<b>Totals</b>				<b>120,789</b>	<b>39,092</b>	<b>32.36%</b>	<b>81,697</b>	<b>67.64%</b>			

## CLEARFIELD COUNTY

### *Sinnemahoning Creeks and Branches / Elk Country Corridor*

*Projects:* Complete feasibility studies for the proposed and non-motorized shared use rail trail corridor, proposed hiking trail connections in Sinnemahoning, and proposed water trails along Sinnemahoning Creek and branches.

*Counties:* Cameron, Clearfield, Elk, and Potter

*Length:* 13.7 miles

*Description:* The proposed Elk Country Trail follows the former corridor of the Pittsburgh and Shawmut Railroad which connects DuBois in Clearfield County with Driftwood in Cameron County. If completed the Elk Country Trail will provide connections to the Bucktail Path, Quehanna, and Donut Hole Trails.

Explore the feasibility of an interconnected network of water trails along Sinnemahoning Creek, Bennetts Branch, Driftwood Branch and First Fork Sinnemahoning Creek.

Evaluate opportunities for conservation easements, agricultural best management practices, stream improvements, fishing access, and evaluate opportunities for water quality improvements such as acid mine drainage remediation and non-point source pollution along Sinnemahoning Creek, Driftwood Branch, Bennetts Branch and First Fork Sinnemahoning Creeks.

We recommend a feasibility study be completed to determine how to connect the land based trails to Sinnemahoning Borough and to one another. By making these connections hikers will be able to connect with every major State Forest Hiking Trail in the PA Wilds and beyond. This would make for the largest regional trail connection proposed to date. These corridors also connect with the proposed Norfolk Southern, Sinnemahoning to Sinnemahoning State Park, and Elk Country rail trail corridors recommended herein.

Other regional assets in this corridor include Sinnemahoning State Park, the Lumber Heritage Region, PA Wilds Elk Viewing Center, Elk State Forest and Natural Areas as well as the Bucktail Trail and Elk scenic drives.

In addition to the recreation and transportation benefits this trail corridor will provide, it is also situated adjacent to several Natural Systems Greenways including; Sinnemahoning Creek, Bennetts Branch, Driftwood Branch and First Fork Sinnemahoning Creek.

The City of DuBois and Emporium are proposed as a trail towns within this corridor while Penfield, Benezette, Driftwood, and Sinnemahoning are proposed as major hubs and Sinnemahoning State Park is proposed as a hub.

*Potential Partners:* Driftwood, Benezette, Penfield, DuBois, DuBois Revitalization Group, Cameron County, Cameron County Conservation District, Elk County, Elk County Conservation District, Clearfield County, Clearfield County Conservation District, Elk State Forest, Sinnemahoning State Park, PA DCNR, PA Wilds Planning Team, Lumber Heritage Region of

Pennsylvania, Inc., Northwest Pennsylvania's Great Outdoors Visitors Bureau, Headwaters Resource Conservation and Development Council, North Central Planning and Development Commission, PA DCNR Bureau of Forestry, Upper Sinnemahoning Creek Watershed Association, Bennett's Branch Watershed Association, Bucktail Watershed Association, Trout Unlimited, Pennsylvania Fish and Boat Commission, Pennsylvania Department of Environmental Protection.

### ***DuBois to Falls Creek Trail***

Project: Develop and improve the DuBois to Falls Creek Trail following the recommendations of the Sandy Lick Creek Recreation Area Master Plan.

Potential Partners: DuBois, Falls Creek, Tri-County Trails Association, Greater DuBois Chamber of Commerce, DuBois Revitalization Group, Sandy Lick Conservation Initiative, Clearfield County Conservation and Recreation Authority, Pennsylvania Department of Conservation and Natural Resources, Clearfield County Conservation and Recreation Authority.

### ***Snowshoe Rail Trail***

Project: Maintain the vital link between Clearfield and Centre Counties by improvements to the trail, specifically the viaduct bridge.

Potential Partners: Clearfield County Conservation and Recreation Authority, Snowshoe Rail Trail Association, PA DCNR, PA Wilds Planning Team, Lumber Heritage Region of Pennsylvania, Inc., Headwaters Resource Conservation and Development.

### ***West Branch Susquehanna River***

Project: Develop and implement trail town philosophy for Karthaus, Clearfield, and Curwensville.

Potential Partners: Karthaus Borough, Clearfield, Curwensville, Clearfield Chamber of Commerce, Clearfield County Conservation and Recreation Authority, North Central Planning and Development Commission, Northwest Pennsylvania's Great Outdoors Visitors Bureau, Clearfield County, Pennsylvania Department of Community and Economic Development.

### ***Curwensville Lake***

Project: Prepare master plan update for Curwensville Lake.

Potential Partners: Curwensville Lake Authority, Clearfield County Conservation and Recreation Authority, Clearfield County, Pennsylvania Department of Conservation and Natural Resources, U.S. Army Corps of Engineers.

### ***Clearfield Riverwalk and Camp Wopsonononock Natural Area***

Projects: Complete planning efforts and implement recommendations for Clearfield Riverwalk and Camp Wopsonononock Natural Area.

Potential Partners: Clearfield Borough, Clearfield County, Clearfield County Conservation

and Recreation Authority, Pennsylvania Department of Conservation and Natural Resources, Pennsylvania Fish and Boat Commission, Pennsylvania Department of Environmental Protection.

### ***Chest Creek and Clearfield Creek***

Project: Evaluate opportunities for the proposed Chest Creek and Clearfield Creek Water Trails.

Potential Partners: Chest Creek Watershed Alliance, Clearfield County, Cambria County, Mahaffey, Westover, Clearfield, Madera, Trout Unlimited, Pennsylvania Department of Conservation and Natural Resources, Pennsylvania Fish and Boat Commission, Clearfield County Conservation and Recreation Authority, Pennsylvania Department of Environmental Protection.

Project: Expand fishing access to Chest Creek by acquiring fishing access easements / property.

Potential Partners: Chest Creek Watershed Alliance, Trout Unlimited, Clearfield County, Cambria County, Clearfield County Conservation and Recreation Authority, Cambria County Conservation and Recreation Authority, Pennsylvania Department of Conservation and Natural Resources, Pennsylvania Fish and Boat Commission, Rock Run Recreation Area.

### ***Byways***

Projects: West Branch and West Branch Loop Scenic Byways

Potential Partners: Karthaus Borough, Clearfield, Curwensville, Grampian, Mahaffey, Clearfield Chamber of Commerce, North Central Planning and Development Commission, Clearfield County Conservation and Recreation Authority, Clearfield County, Pennsylvania Department of Community and Economic Development, Susquehanna River Partnership, Bilgers Rocks Association PA Wilds Planning Team, Lumber Heritage Region of Pennsylvania, Inc., Pennsylvania Byways Program.

### ***Muddy Run and Clearfield Creek Natural Systems Greenway Corridors***

Project: Complete watershed conservation plan. Explore potential for acquisition of conservation easements and riparian easements, educate, advocate, implement agricultural best management practices on priority farms having the greatest impacts on water quality, identify and address acid mine drainage issues, conduct streambank stabilization efforts, promote sustainable development practices, and identify and address on-lot septic issues.

Project: Evaluate opportunities for establishing conservation easements, sustainable forestry and agricultural practices, and water quality improvement projects such as acid mine drainage and non-point source pollution remediation in the Muddy Run and Clearfield Creek watersheds.

Potential Partners: Clearfield Creek Watershed Association, Clearfield County Conservation District, Western Pennsylvania Conservancy, Headwaters Resource Conservation and Development Council, Susquehanna Greenway Partnership, Trout Unlimited, Pennsylvania Department of Conservation and Natural Resources, Pennsylvania Department of Environmental Protection.

Project: Evaluate opportunities for water quality improvement projects such as acid mine drainage and non-point source pollution remediation.

Potential Partners: Clearfield Creek Watershed Association, Clearfield County Conservation District, Western Pennsylvania Conservancy, Headwaters Resource Conservation and Development Council, Susquehanna Greenway Partnership, Trout Unlimited, Pennsylvania Department of Conservation and Natural Resources, Pennsylvania Department of Environmental Protection.

Project: Complete watershed conservation plan for Clearfield Creek. Explore potential for acquisition of conservation easements and riparian easements, educate, advocate, implement agricultural best management practices on priority farms having the greatest impacts on water quality, identify and address acid mine drainage issues, conduct streambank stabilization efforts, promote sustainable development practices, and identify and address on-lot septic issues.

Potential Partners: Clearfield Creek Watershed Association, Clearfield Borough, Clearfield County, Clearfield County Conservation District, Trout Unlimited, Pennsylvania Department of Conservation and Natural Resources, Pennsylvania Fish and Boat Commission, Clearfield County Conservation and Recreation Authority, Pennsylvania Department of Environmental Protection.

### *Anderson Creek Natural Systems Greenway Corridors*

Projects: Implement recommendations of the Anderson Creek Watershed Assessment, Restoration and Implementation Plan. Explore potential for acquisition of conservation easements and riparian easements, educate, advocate, implement agricultural best management practices on priority farms having the greatest impacts on water quality, identify and address acid mine drainage issues, conduct streambank stabilization efforts, promote sustainable development practices, and identify and address on-lot septic issues.

Potential Partners: Anderson Creek Watershed Association, Clearfield County, Clearfield County Conservation District, Trout Unlimited, Pennsylvania Department of Conservation and Natural Resources, Pennsylvania Fish and Boat Commission, Clearfield County Conservation and Recreation Authority, Pennsylvania Department of Environmental Protection.

### *West Branch Susquehanna River Natural System Greenway Corridor*

Projects: For the West Branch Susquehanna River Natural System Greenway Corridor explore potential for acquisition of conservation easements and riparian easements, educate, advocate, implement agricultural best management practices on priority farms having the greatest impacts on water quality, and sustainable land development practices.

Potential Partners: Susquehanna Greenway Partnership, Clearfield County, Clearfield County Conservation District, Clearfield County Conservation and Recreation Authority, Trout Unlimited, Pennsylvania Department of Conservation and Natural Resources, Pennsylvania Fish and Boat Commission, Pennsylvania Department of Environmental Protection.



## POTENTIAL PARTNERS

Potential partners are the agencies and organizations that have been identified in Clearfield County that may be able to assist with various aspects of project implementation. This list is not all inclusive, but it identifies the typical agencies and organizations that can be a resource for project implementation.

### *Clearfield County's Potential Partners*

#### *State Agencies*

Mr. Vance Dunbar  
Pennsylvania Fish and Boat Commission  
P.O. Box 272  
Hyde, PA 16843

Mr. Bob Merrill  
Moshannon State Forest  
3372 State Park Road  
Penfield, PA 15849

Ms. Beth Grove  
Parker Dam State Park  
28 Fairview Road  
Penfield, PA 15849-9799  
814-765-0630  
parkerdamsp@state.pa.us

#### *County Agencies*

Clearfield Conservation District  
650 Leonard Street  
Clearfield, PA 16830  
814-765-2629  
www.clfdccd.com  
clfdccd@atlanticbbn.net

Ms. Sandy Fink Barrett  
Clearfield County Recreation & Tourism Authority  
12 N. Front Street  
Clearfield, PA 16830  
814-765-5734  
sfbarrett@clearfieldco.org

Ms. Kathie Lansberry , Operations Manager  
Curwensville Lake Authority  
Assistant Operation Manager: Shane Kelly  
814-236-2320  
clra@pennswoods.net

#### *Trail Associations*

Mr. Ben Coppolo  
Bennetts Valley Rail Trails  
P.O. Box 108  
Weedville, PA 15868

Ms. Linda Hatcher  
Clearfield County Rails to Trails Association  
151 Northview Drive  
Clearfield, PA 16830  
814-765-9771  
ghatcher1@verizon.net

Houtzdale Line Trails to Trails, Inc.  
501 David Street  
Houtzdale, PA 16651  
814-378-7817

Clearfield Grampian Rail Trail  
151 Northview Drive  
Clearfield, PA 16830

Quehanna Area Trails Club  
882 Rolling Stone Road  
Morrisdale, PA 16858

#### *Land Trust / Land Owner Associations*

The Bilger's Rocks Association  
P.O. Box 133  
Grampian, Pa 16838  
(814) 236-1617  
info@bilgersrocks.com  
www.bilgersrocks.com

Clarion County Forest Stewardship Council  
8 Grant Street  
Clarion, PA 16214  
<http://clarion.extension.psu.edu/Agriculture/Forestry.html>

Mr. Gary Gilmore  
Clearfield - Jefferson Counties Forest Stewardship  
Committee  
1514 Rt. 28  
Brookville, PA 15825  
[ggilmore@state.pa.us](mailto:ggilmore@state.pa.us)

Ms. Renee Carey, Executive Director  
Northcentral Pennsylvania Conservancy  
PO Box 2083  
Williamsport, PA 17703  
570-323-6222  
[www.npcweb.org](http://www.npcweb.org)  
[rcarey@npcweb.org](mailto:rcarey@npcweb.org)

Western Pennsylvania Conservancy  
800 Waterfront Drive  
Pittsburgh, PA 15222  
412-288-2777  
<http://conserveland.org>  
[info@paconserve.org](mailto:info@paconserve.org)

The Susquehanna Greenway Partnership  
201 Furnace Road  
Lewisburg, PA 17837  
570-522-7211  
[greenway@susquehannagreenway.org](mailto:greenway@susquehannagreenway.org)

#### *Watershed Associations*

Mr. Malcolm Barnes  
Anderson Creek Watershed Association  
3402 Grandview Road  
Curwensville, PA 16833

Mr. Earl Smithmeyer  
Clearfield Creek Watershed Association  
216 Beldin Hollow Road  
Ashville, PA 16613  
[www.clearfieldcreekwatershed.org](http://www.clearfieldcreekwatershed.org)  
Mr. Ken Rowe  
Bennett Branch Watershed Association  
P.O. Box 99  
Benezette, PA 15821

Headwaters Resource Conservation & Development  
Council, Inc.  
478 Jeffers Street  
DuBois, PA 15801  
814-375-1372 ext. 4  
[headwatr@penn.com](mailto:headwatr@penn.com)  
[www.parc.org/Headwaters/headwaters%20home.htm](http://www.parc.org/Headwaters/headwaters%20home.htm)

Deer Creek Watershed Association  
c/o Clearfield County Conservation District  
650 Leonard Street  
Clearfield, PA 16830-3243

Little Clear Creek Watershed Association  
2278 Little Clear Creek Road  
Olanta, PA 16863

Morgan Run Watershed Group  
c/o Clearfield County Conservation District  
650 Leonard Street  
Clearfield, PA 16830-3243

Mr. Dan Snyder  
Chest Creek Watershed Alliance  
392 Glendale Lake Road  
Patton, PA 16668  
[www.pattonboro.com/chestcreek/](http://www.pattonboro.com/chestcreek/)

Mr. John Dugan  
DuBois City Watershed Commission  
P.O. Box 408  
DuBois, PA 15801-0408

Mr. Art Beveridge  
Moshannon Creek Watershed Coalition  
P.O. Box 4  
Osceola Mills, PA 16666-0004

Ms. Anna Mae Pezzulla  
Emigh Run Watershed Association  
P.O. Box 204  
Clearfield, PA 16830-0508

Mr. Bill Lawhead  
Montgomery Run Watershed Association  
P.O. Box 508  
Clearfield, PA 16830-0508

Mr. Paul Staniszewski  
Upper Mahoning Creek Watershed Association  
McGees Mills Road, Box 1  
Troutville, PA 15866

Hubler Run Watershed Association  
313 Fifth Street  
Philipsburg, PA 16823

Mike and Linda Makufka  
Sandy Lick Conservation Initiative  
P.O. Box 93  
DuBois, PA 15801-0093

*Sportsmen Clubs*

Mr. Lou Marrara  
Mosquito Creek Sportsmen's Association  
P.O. Box 218  
Frenchville, PA 16836-0218

Central Counties Concerned Sportsmen

Pennsylvania Wildlife Habitat Unlimited  
[www.pwhu.org](http://www.pwhu.org)

Trout Unlimited  
Allegheny Mountain Chapter #036  
Allegheny Mountain # 036  
107 Simmons St.  
DuBois, PA 15801  
[maksak@comcast.net](mailto:maksak@comcast.net)

Mr. George Hill  
Woodduck Chapter 235 Trout Unlimited  
125 North Eleventh Street  
Philipsburg, PA 16866

Mr. Joel Kraus  
West Branch Sportsmen's Association  
2657 Schoonover Road  
Kylertown, PA 16837

Woodduck Chapter Trout Unlimited  
  
Clearfield County Senior Environment Corps

*ATV Clubs / Areas*

Rock Run Recreation Area  
1228 Saint Lawrence Road  
Patton, PA 16668-8701  
(814) 674-6026  
[www.rockrunrecreation.com](http://www.rockrunrecreation.com)  
[rock\\_run@verizon.net](mailto:rock_run@verizon.net)

Central Pennsylvania ATV Association Inc.  
P.O. Box 275  
Houtzdale, PA 16651  
Bob Abernethy  
[www.cpatva.org](http://www.cpatva.org)  
[boba @ csrlink.net](mailto:boba@csrlink.net)

Snow Shoe Rails to Trails  
P.O. Box 314  
Clarence, PA 16829  
Mr. Trilby Mayes  
[www.ssrt.org](http://www.ssrt.org)  
[cooper\\_2356 @ yahoo.com](mailto:cooper_2356@yahoo.com)  
(814) 387-6518

Mr. Kenneth Emmerick  
T-Lake Riders Club  
611 West Main Street  
Ridgway, PA 15853  
(814) 772-1271  
[kenemm@alltel.net](mailto:kenemm@alltel.net)

*Snowmobile Clubs*

Hilltop Howlers  
PO Box 169  
Clearfield, PA 16830  
814/583-7030

*Outfitters*

Mr. Dave McCracken  
McCrackens Canoe Rental & Sales  
5409 Shawville Highway  
Clearfield, PA 16830  
814-765-1410  
paddle@mccrackencanoe.com.  
Visitors Bureaus / Chambers of Commerce

Ms. Sandy Fink-Barrett  
Clearfield County Recreation & Tourism Authority  
12 North Front Street  
Clearfield, PA 16830  
814-765-5734  
www.visitclearfieldcounty.org  
info@visitclearfieldcounty.org

Clearfield Chamber of Commerce  
125 E. Market Street  
PO Box 250  
Clearfield, PA 16830  
814-765-7567  
www.clearfieldchamber.com

DuBois Chamber of Commerce  
33 N. Brady Street  
DuBois, PA 15801  
814-371-5010  
www.duboispatchamber.com

Downtown DuBois Revitalization Group  
109 North Brady Street, Second Floor  
DuBois, PA 15801  
814-371-3064  
downtowndubois@verizon.net

*Healthcare*

Clearfield Hospital  
809 Turnpike Avenue  
Clearfield, PA 16830  
(814) 765-5341  
www.clearfieldhosp.org

DuBois Regional Medical Center  
100 Hospital Avenue  
DuBois, PA 15801  
(814) 371-2200  
www.drmc.org

*Historical Societies / Associations*

Clearfield County Historical Society and Museum  
104 East Pine Street  
Clearfield, PA 16830  
www.clfdhistory.org  
dshaffner@clfdhistory.org